



[Home](#) | [Learn More](#) | [Release Features](#) | [Success Stories](#) | [Contact Us](#) | [Search Archives](#) | [PRWeb Direct](#) | [Submit Release](#) | **February 21, 2008**

[Industry Categories](#) | [News by Country](#) | [News by MSA](#) | [Today's News](#) | [Browse by Day](#) | [PR Trackbacks™](#) | [Featured Videos](#) | [ViewNews™](#) | [eBook Digests](#) | [RSS](#)

PRWeb, a leader in online news and press release distribution, has been used by more than 40,000 organizations of all sizes to increase the visibility of their news, improve their search engine rankings and drive traffic to their Web site.

[All Press Releases for February 19, 2008](#)

Subscribe to this News Feed [XML](#) | Subscribe to this Podcast Feed [PODCAST](#)



SurroundArt Selects the Architect of NYC's Famed Chelsea Piers to Create New "Green" Museum Resource Campus at Brooklyn Navy Yard

Steven Kratchman Architect Chosen for Architectural Master Plan for New Waterfront Development

Brooklyn, NY ([Vocus/PRWEB](#)) February 19, 2008 -- [SurroundArt](#), a leading provider of fine arts services, today announced that it has retained the firm [Steven Kratchman Architect, P.C.](#) for the company's new "green" Museum Resource Campus currently under construction at the Brooklyn Navy Yard.

Expected to open in fall, 2008, the three-building campus includes a new, 89,000 square foot building on Perry Avenue, now in construction; another 71,000 square feet in Building Three at the [Navy Yard](#); and the adaptive re-use of the historic, century-old Paymaster Building. With an emphasis on green design, the new Perry Ave. building will be the first-ever multi-story, multi-tenanted [LEED Silver](#) Industrial Building in the United States. The Kratchman firm has been asked to design and unify the new SurroundArt campus with an emphasis on sustainability.



This will be the third major waterfront development project for architect and urban

“ Most people do not of think of 'green' and 'urban industrial design' in the same sentence, but we have made a commitment to combining the two at the Navy Yard and that's exactly why we selected Steven Kratchman ”

designer Steven Kratchman, AIA. Before establishing his own firm in 1999, Kratchman served as lead designer of the now world-renowned Chelsea Piers recreational complex. Prior to that, he also designed the Hudson Park mixed-use waterfront development in Yonkers, N.Y., which consists of residential, retail and office space, as well as a waterfront pedestrian esplanade and park.

"Most people do not of think of 'green' and 'urban industrial design' in the same sentence, but we have made a commitment to combining the two at the Navy Yard and that's exactly why we selected Steven Kratchman," said

Michael Murray, CEO of SurroundArt. "Our new Museum Resource Campus will provide everything the arts industry needs within a green, cutting-edge design built for 21st century sustainability."

SurroundArt provides fine arts services such as secure storage, crating, packing, transportation, fabrication, exhibition design, and installation. The ambitious Museum Resource Campus is the first and only one of its kind in the nation and is being built to support the arts industry in New York and beyond.

"This is a tremendously exciting project for many reasons, not the least of which is the commitment SurroundArt has made to green design and sustainability," Kratchman said. "As the architects, our team will have an opportunity to create a design that integrates the old and the new for a new era of mixed-use, clean urban industry and waterfront development at the Brooklyn Navy Yard."

Based in New York City, the Kratchman firm believes in green, energy-efficient architectural design with an emphasis on new technologies that offer a payback of three years or fewer. Kratchman's firm of 15 professionals focuses on both commercial and residential projects, including historic and landmark properties.

About SurroundArt

OPTIONS

- [Printer Friendly Version](#)
- [Download PDF Version](#)
- [Download Reader Version](#)
- [BlogThis](#)
- [ShareIt](#)

CONTACT INFORMATION

Greg Abel
SurroundArt
[Visit Our Site](#)
(410) 466-2210
[Email us Here](#)

Daniel Kennedy
Steven Kratchman Architect
[Visit Our Site](#)
212-580-3454
[Email us Here](#)

ATTACHED FILES



[Rendering of the new Perry Ave. Building at SurroundArt's Museum Resource Campus.](#)



[SurroundArt](#)

ABOUT PRESS RELEASES

If you have any questions regarding information in these press releases please contact the company listed in the press release. Please do not contact PRWeb. We will be unable to assist you with your inquiry. PRWeb disclaims any content contained in these releases. Our complete disclaimer appears [here](#).

SurroundArt is a full-service museum resource company with offices, workrooms, and warehouses in New York and Washington, DC. Founded in 1998, the company supports the international fine arts community by providing a wide array of services, including temperature-controlled and secure storage, crating, packing, transportation, fabrication, design, and art handling. To accommodate its growth, SurroundArt is developing a unique and expansive "fine arts campus" at the Brooklyn Navy Yard, with more than 165,000 square feet of space under management. Staffed by museum-trained professionals, who are educated in fine arts and passionate about their craft, SurroundArt has become a trusted resource to many of the largest and most respected museums, foundations and private collectors in the world. More information can be found at www.surroundart.com.

About Steven Kratchman Architect, P.C.

The firm Steven Kratchman Architect, P.C., was founded in 1999 by Mr. Steven Kratchman, AIA, the architect and urban designer who previously served as Senior Project Designer for the urban redevelopment team that transformed an abandoned New York City urban harbor area into the now world-renowned Chelsea Piers waterfront recreational complex. The firm has grown from two architects to a professional staff of 15, who work on retail, commercial and residential projects, including multi-family residential, single-family residential, historic and landmark properties, private clubs and sports facilities, educational institutions, new from-the-ground-up buildings and restaurants. www.kratchmanarchitect.com

Media Contacts:

SurroundArt
Greg Abel
(410) 466-2210


Steven Kratchman Architect
Daniel Kennedy
Communications Services
(212) 580-3454

###

[Post Comment:](#)

Trackback URL:

<http://www.prweb.com/pingpr.php/SGFsZi1Mb3ZILVNpbmctRmFsdS1aZXRhLVplcm8=>

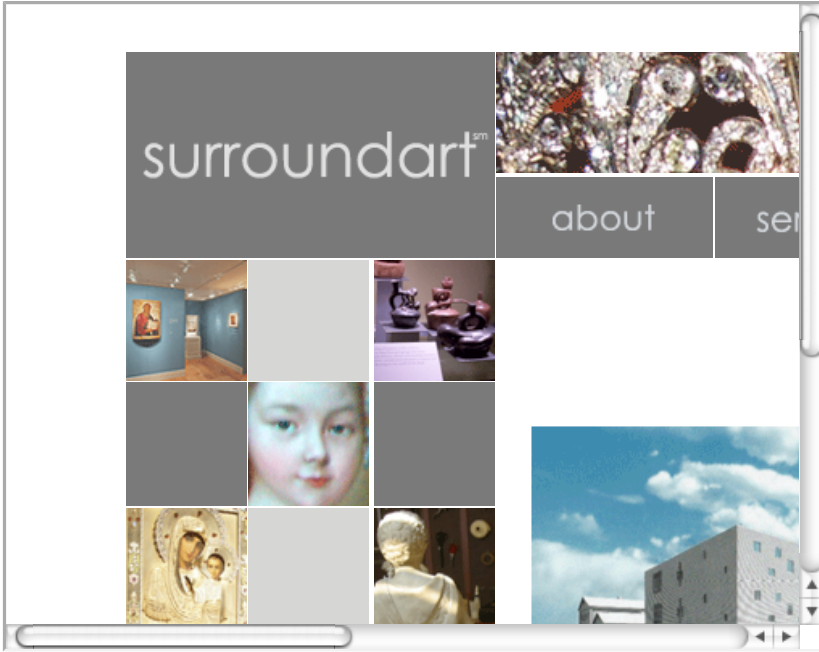
 [art handling](#) [brooklyn navy yard](#) [surroundart](#) [kratchman](#) [chelsea piers](#) [art](#) [art storage](#)

Bookmark - [Del.icio.us](#) | [Digg](#) | [Furl It](#) | [Spurl](#) | [RawSugar](#) | [Simp](#)y | [Shadows](#) | [Blink It](#) | [My Web](#)

[new york](#) [arts](#) [museum](#) [artists](#) [brooklyn](#) [buildings](#) [fine arts](#) [surroundart](#) [brooklyn navy yard](#) [real estate](#)

Other Releases by this Member

- [SurroundArt to Establish Massive New Museum Resource Center at Brooklyn Navy Yard to Support New York Arts Community; Company Signs 20-Year Lease in the Nation's First 'Green' Multi-Story, Multi-Company Industrial Building](#) 2007-11-14



Disclaimer: If you have any questions regarding information in these press releases please contact the company listed in the press release. Please do not contact PRWeb®. We will be unable to assist you with your inquiry. PRWeb® disclaims any content contained in these releases. Our complete disclaimer appears [here](#).

© Copyright 1997-2008, Vocus PRW Holdings, LLC.
Vocus, PRWeb and Publicity Wire are trademarks or registered trademarks of [Vocus, Inc.](#) or Vocus PRW Holdings, LLC.

[Terms of Service](#) | [Privacy Policy](#) | [Copyright](#)